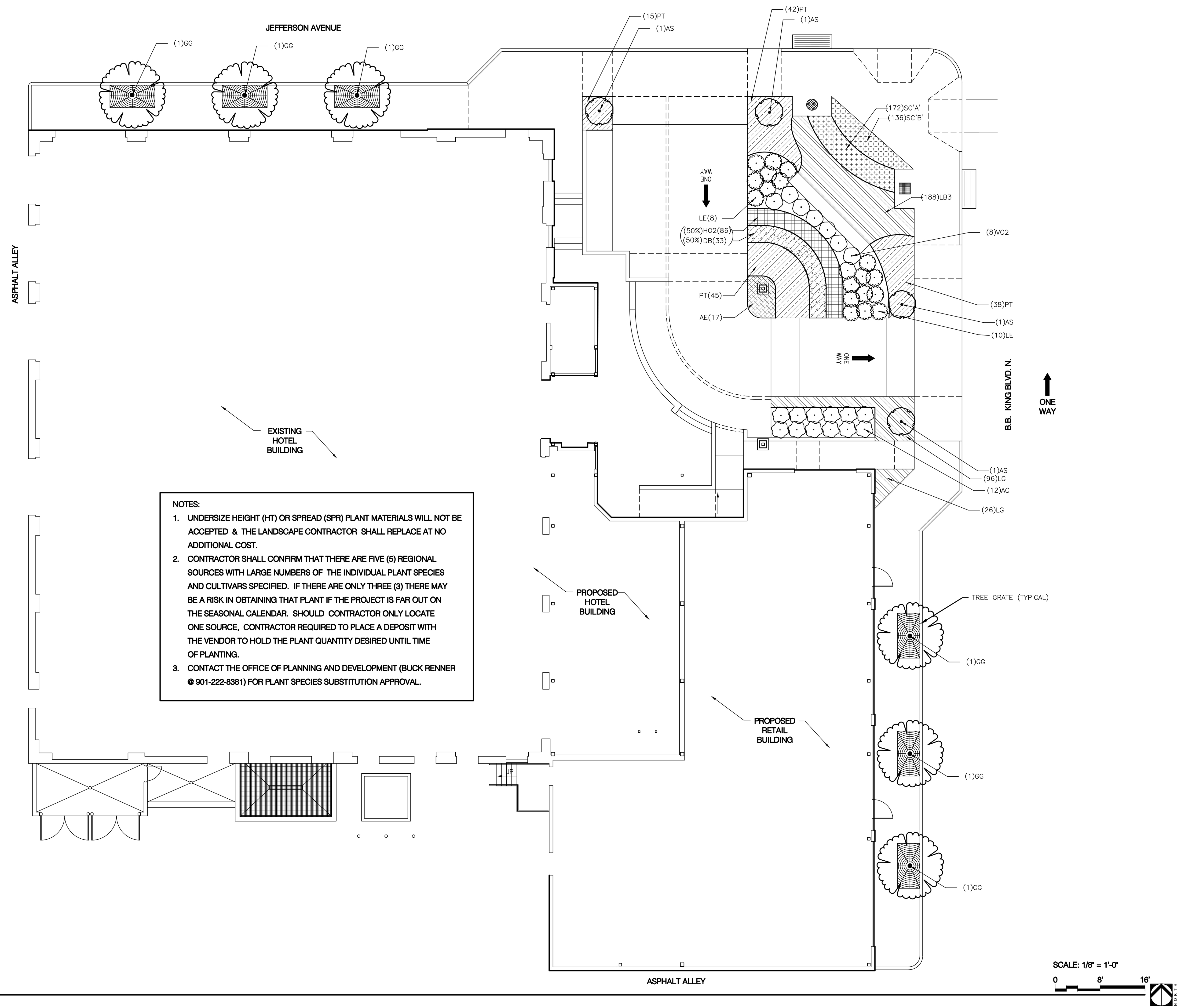


Key Plan

A Landscape development for
Loft Hotel
 Memphis, Tennessee



NOTES:

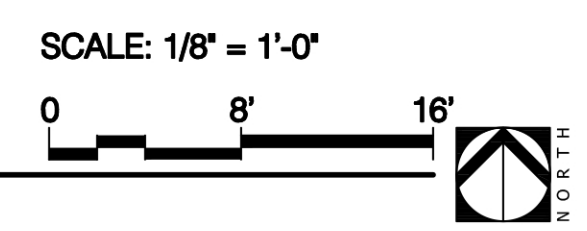
1. UNDERSIZE HEIGHT (HT) OR SPREAD (SPR) PLANT MATERIALS WILL NOT BE ACCEPTED & THE LANDSCAPE CONTRACTOR SHALL REPLACE AT NO ADDITIONAL COST.
2. CONTRACTOR SHALL CONFIRM THAT THERE ARE FIVE (5) REGIONAL SOURCES WITH LARGE NUMBERS OF THE INDIVIDUAL PLANT SPECIES AND CULTIVARS SPECIFIED. IF THERE ARE ONLY THREE (3) THERE MAY BE A RISK IN OBTAINING THAT PLANT IF THE PROJECT IS FAR OUT ON THE SEASONAL CALENDAR. SHOULD CONTRACTOR ONLY LOCATE ONE SOURCE, CONTRACTOR REQUIRED TO PLACE A DEPOSIT WITH THE VENDOR TO HOLD THE PLANT QUANTITY DESIRED UNTIL TIME OF PLANTING.
3. CONTACT THE OFFICE OF PLANNING AND DEVELOPMENT (BUCK RENNER @ 901-222-8381) FOR PLANT SPECIES SUBSTITUTION APPROVAL.

Revisions		
No.	Date	Revisions / Submissions

Registration
 JS Drawn
 JEC Checked
 Project No. 3-15-18
 Date

Sheet Title

LANDSCAPE PLAN



PLANT SCHEDULE

TREES	CODE	QTY	BOTANICAL NAME	COMMON NAME	CONT	CAL	HT	REMARKS
	AS	4	Acer palmatum 'Tomby's Sentinel'	Japanese Maple	B & B		5'-6'	Multi-Trunk, 3-5 stems/plant
	GG	6	Ginkgo biloba (Columnar)	Bryson City	45 gal		8-10' HT	Grindstone Lake/Mayfield/Sky Tower- Allowable Substitutions

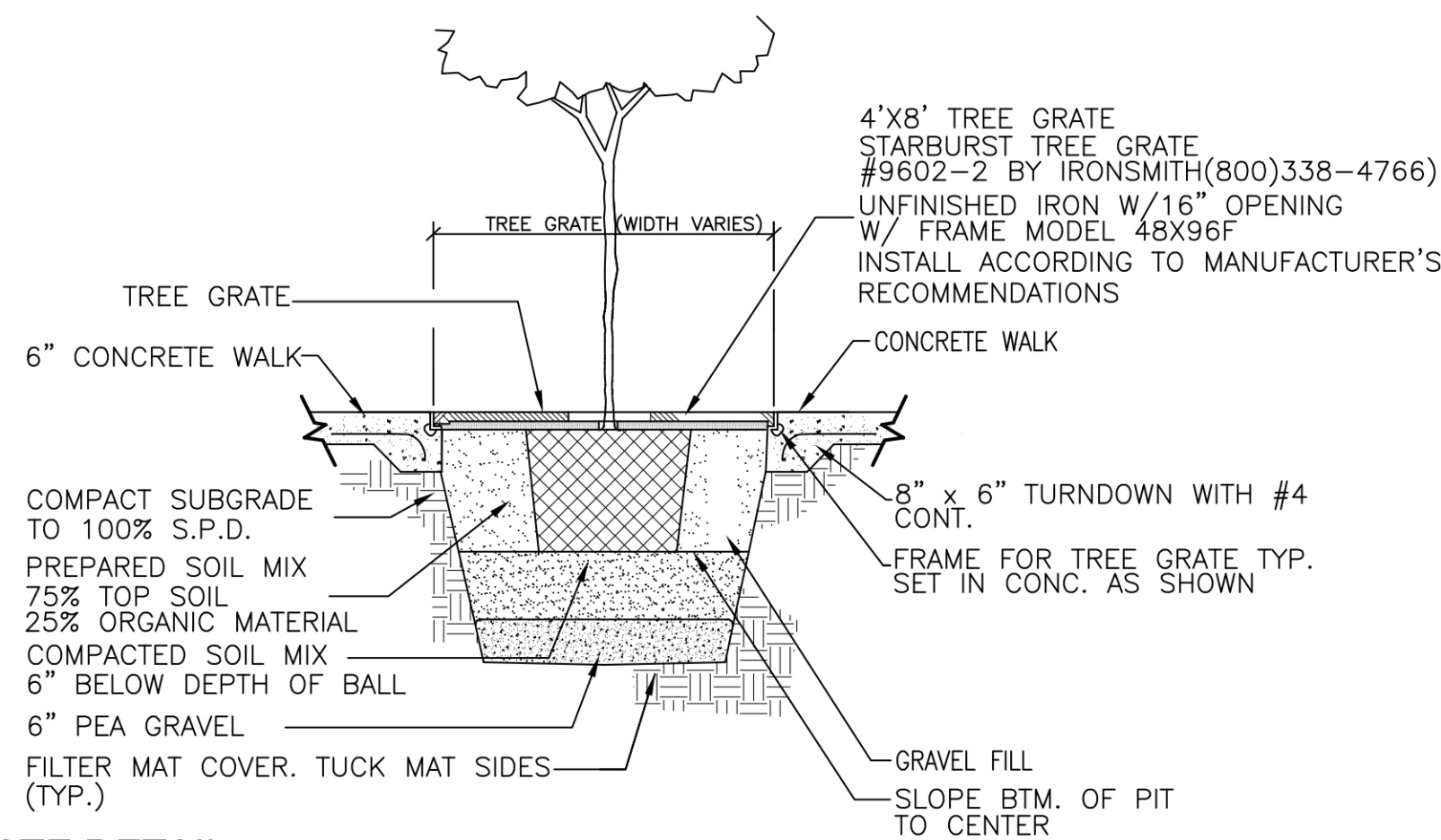
SHRUBS	CODE	QTY	BOTANICAL NAME	COMMON NAME	HT	SPACING	REMARKS
	AC	12	Aucuba chinensis	Dwf Aucuba	3 gal	18" min.	36" o.c.
	LE	18	Loropetalum chinense 'Emerald Snow'	Emerald Snow Loropetalum	7 gal	18" min.	36" o.c. Full

SHRUB AREAS	CODE	QTY	BOTANICAL NAME	COMMON NAME	CONT	SPACING	REMARKS
	VO2	8	Viburnum davidii	David's Viburnum	7 gal	36" o.c.	Full
	AE	17	Aspidistra elatior	Cast Iron Plant	1 gal	18" o.c.	Plant 18" o.c.
	DB	33	Dryopteris erythrosora 'Brilliance'	Autumn Fern	3 gal	18" o.c.	
	HO2	86	Helleborus orientalis	Lenten Rose	1 gal	12" o.c.	

GROUND COVERS	CODE	QTY	BOTANICAL NAME	COMMON NAME	CONT	SPACING	REMARKS
	LB3	310	Liriope muscari 'Big Blue'	Big Blue Liriope	1 gal	12" o.c.	Full
	PT	140	Pachysandra terminalis	Japanese Spurge	1 gal	18" o.c.	
	SC	308	Seasonal Color	Seasonal Color	4" pot	8" o.c.	

QUANTITY TAKEOFF DISCLAIMER:

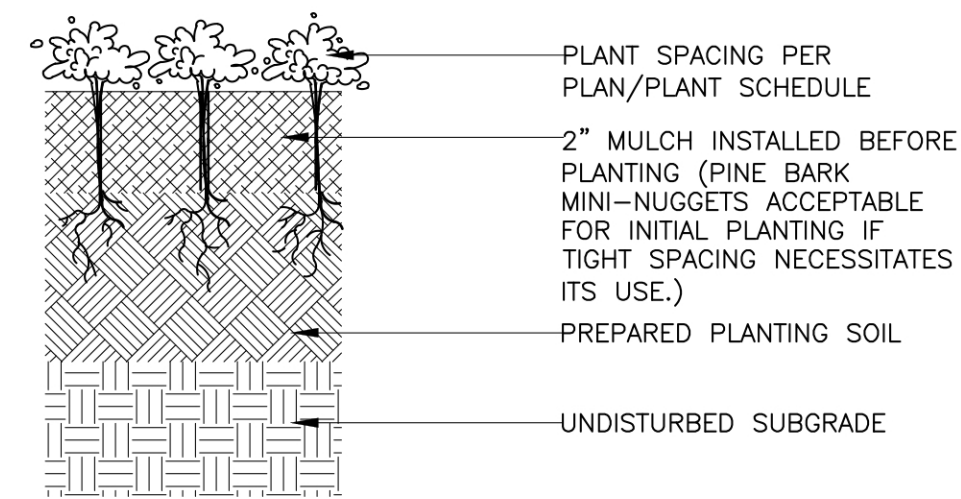
QUANTITIES NOTED ON PLANS ARE OFFERED AS A CONVENIENCE TO THE CONTRACTOR FOR BID PURPOSES ONLY. CONTRACTOR SHALL VERIFY ALL QUANTITIES AND REPORT ANY DISCREPANCIES TO THE LANDSCAPE ARCHITECT.



4 TREE GRATE DETAIL

3/8" = 1'-0"

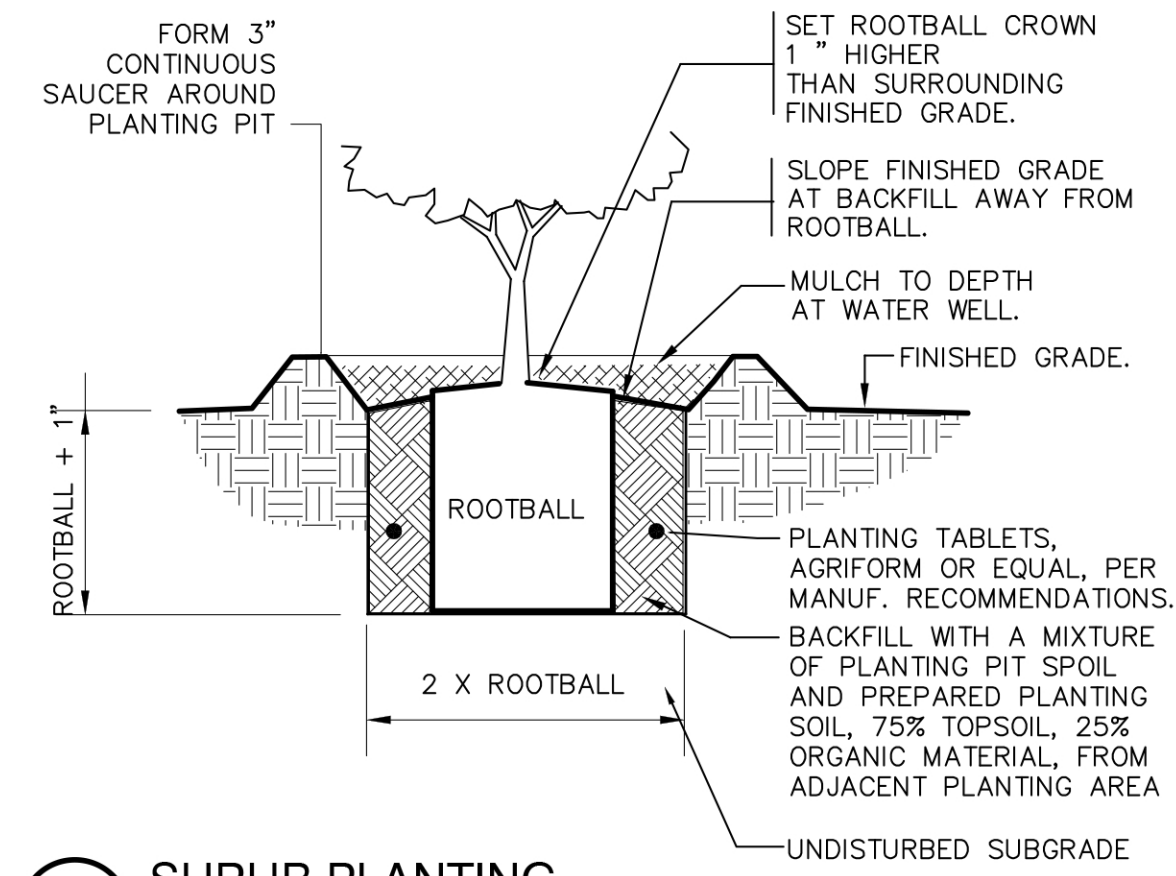
329343-05



5 GROUND COVER PLANTING

3" = 1'-0"

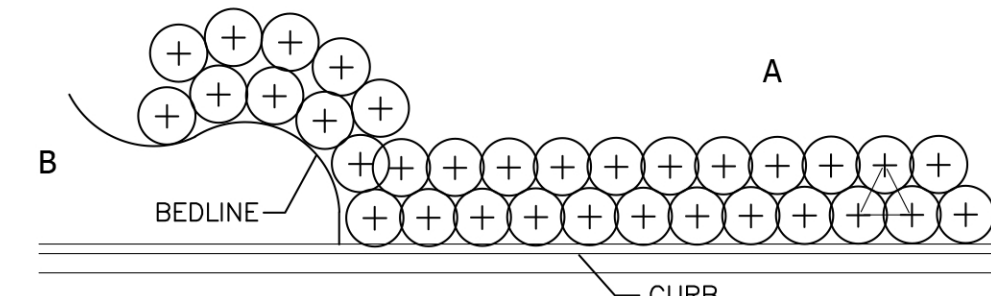
DETAIL-FILE



1 SHRUB PLANTING

1" = 12"

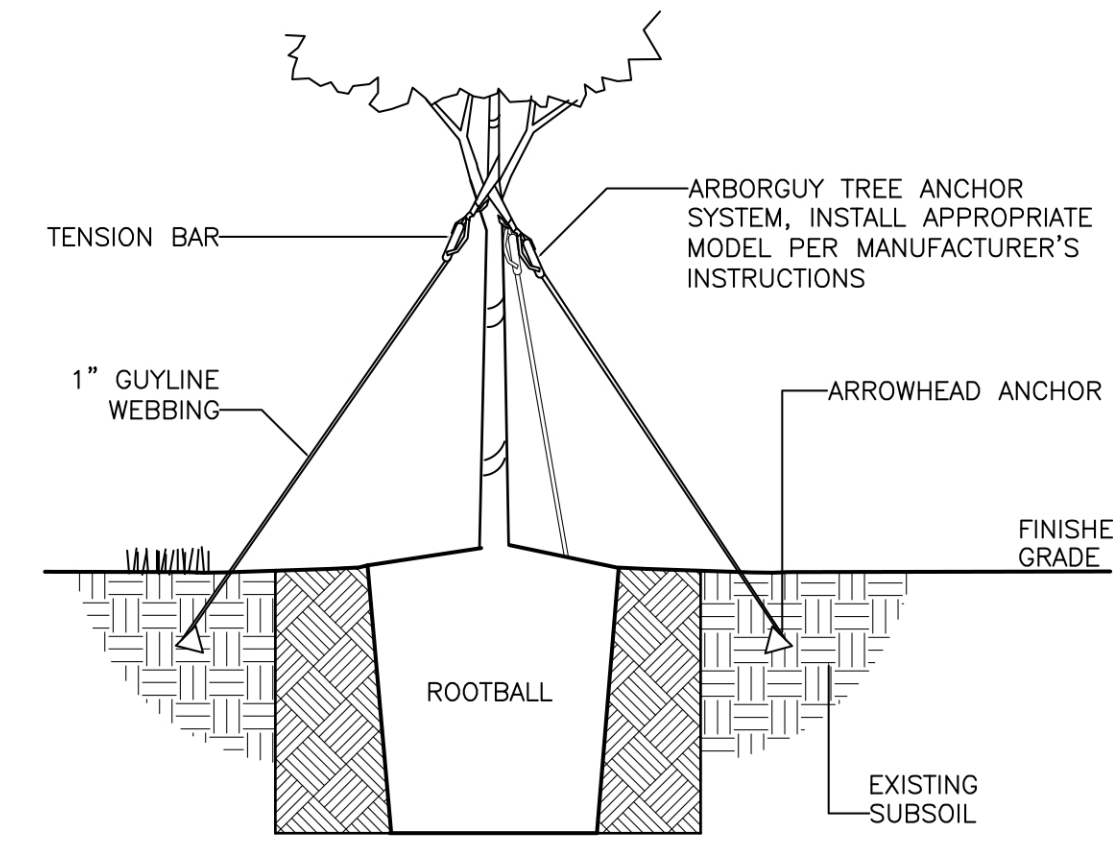
DETAIL-FILE



2 TYPICAL PLANT SPACING

NOT TO SCALE

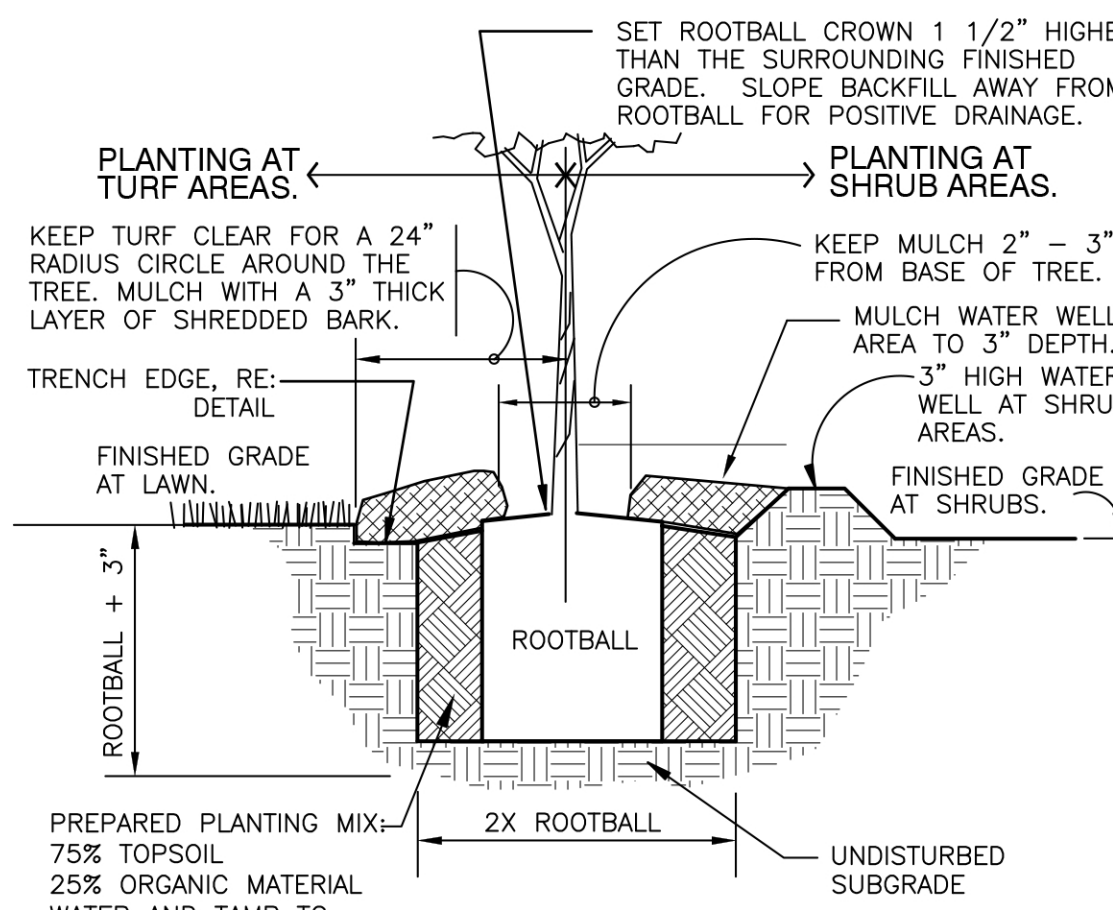
329399-04



3 TREE PLANTING - GUY STRAP

1" = 1'-0"

DETAIL-FILE



3 TREE PLANTING - PLANT PIT DETAIL

2 TYPICAL PLANT SPACING

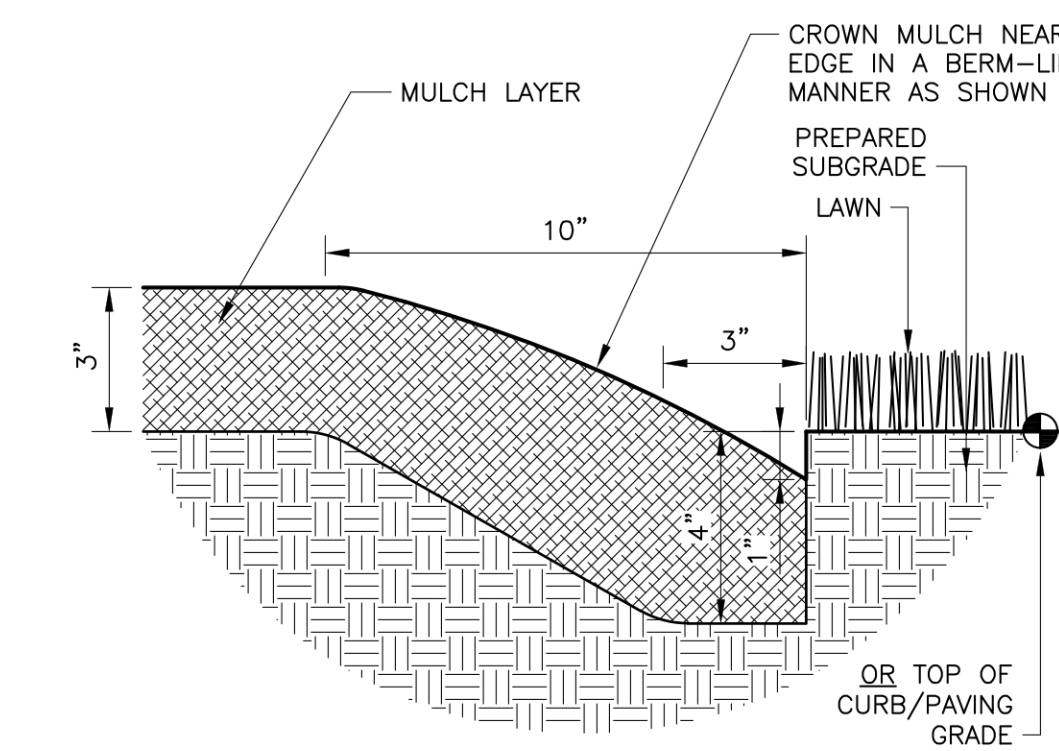
NOT TO SCALE

329399-04

3 TREE PLANTING - GUY STRAP

1" = 1'-0"

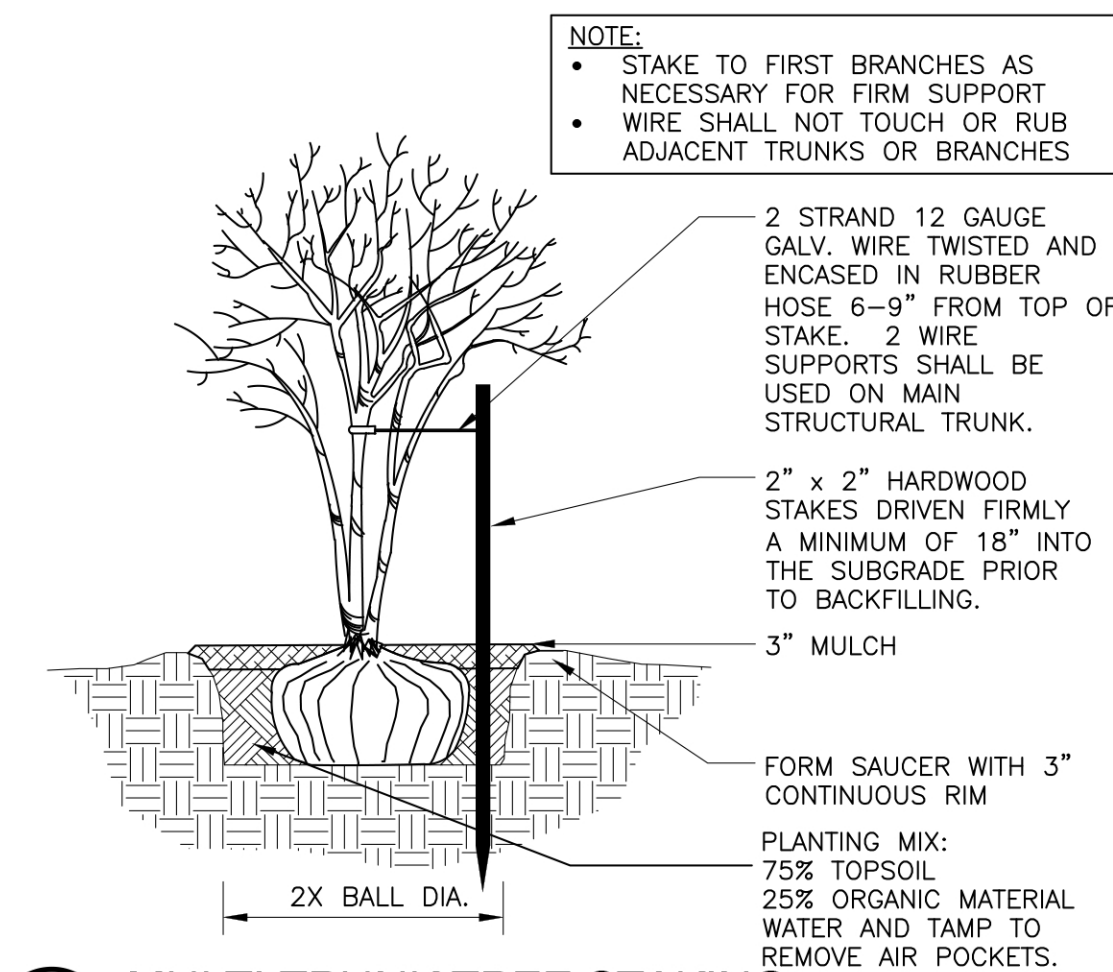
DETAIL-FILE



6 TRENCH EDGE

3" = 1'-0"

DETAIL-FILE



7 MULTI-TRUNK TREE STAKING

1/2" = 1'-0"

329343-01

Key Plan

A Landscape development for
Aloft Hotel
Memphis, Tennessee

Revisions		
No.	Date	Revisions / Submissions

Registration
JS Draw
JEC Checked
Project No. 3-15-18
Date

Sheet Title

LANDSCAPE DETAILS

Sheet No.

LP500