

**MARRIOTT
FAIRFIELD**

290 POWER DRIVE,
BATESVILLE, MS 38606

SEAL

COPY RIGHTED BY:
BYRON B. CARSON, JR., AIA-ARCHITECT - 2014
DRAWINGS, SPECIFICATIONS, AND DESIGN
CONCEPTS CONTAINED HEREWITH SHALL NOT BE
USED OR REPRODUCED IN WHOLE OR IN ANY
FORM, WITHOUT THE WRITTEN CONSENT OF -
BYRON B. CARSON, JR., AIA-ARCHITECT. DO NOT
SCALE THESE DRAWINGS. USE GIVEN
DIMENSIONS ONLY. IF NOT SHOWN, VERIFY
CORRECT DIMENSIONS WITH THE ARCHITECT.
CONTRACTOR SHALL VERIFY ALL DIMENSIONS
PRIOR TO INSTALLATION OF THE WORK
DESCRIBED HEREIN.

CONSULTANTS

ISSUES & REVISIONS

NO.	DATE	DESCRIPTION
1	01/19/2016	FOR CONSTRUCTION
2	03/11/2016	REVISION # 2

PROJECT NAME:

PROJECT NUMBER:

DRAWING NAME:

SCHEDULES -
PLUMBING

DRAWN BY: MDP

CHECKED BY: MDP

DATE: 01-19-16

SCALE: AS NOTED

DRAWING NUMBER

P002



DOMESTIC WATER BOOSTER PUMP SCHEDULE

QUANTITY	LOCATION	SERVICE	MANUFACTURER	MODEL	GPM EACH PUMP	EST. HEAD FT.	RPM EACH PUMP	HORSEPOWER EACH PUMP	ELECTRICAL CHARACTERISTICS	TYPE
1	MECH ROOM	DOMESTIC	ARMSTRONG	6901	60	60	3600	5	208V/3φ/60 Hz.	CONSTANT SPEED - DUPLEX PUMPS NO-FLOW SHUT DOWN

1. PROVIDE DUPLEX ARRANGEMENT AS A PRE PIPED PRE WIRED PACKAGED SYSTEM. FURNISH WITH CONTROL PANEL INCLUDING GAUGES FOR INCOMING AND DISCHARGE PRESSURE.
2. STARTERS WITH DISCONNECT SWITCH, AND OVERLOAD & HAND OFF AUTOMATIC SWITCH. PROVIDE PRESSURE CONTROL WITH SUCTION CUT-OUT & TIME CLOCK ALTERNATOR.
3. PACKAGE SHALL INCLUDE 106 GALLON 125# ASME BLADDER TANK MOUNTED ON SAME BASE AS PUMPS AND CONTROLLER.
4. PROVIDE ISOLATION VALVES AND CHECK VALVES ON THE INLET AND DISCHARGE SIDE OF EACH PUMP. SYSTEM SHALL BE CAPABLE OF PRODUCING A PSI PRESSURE BOOST AT 202 GPM.
5. PROVIDE VIBRATION ISOLATION DAMPERS.

WATER HEATER SCHEDULE - NATURAL GAS

MARK	QTY.	MANUFACTURER	MODEL NO.	LOCATION	SYSTEM	FUEL	BTUH	E. W. T.	L. W. T.	RECOVERY (GPH)	STORAGE (GALLONS)	FUEL CONN.	FLUE DIA.	REMARKS
WH-1	1	A. O. SMITH	BTH-199	SEE DWG	DOM. H. W.	NAT. GAS	199,000	40" F	140" F	230	100	3/4"	3"	
WH-2	1	A. O. SMITH	BTH-199	SEE DWG	DOM. H. W.	NAT. GAS	199,000	40" F	140" F	230	100	3/4"	3"	
WH-2	1	A. O. SMITH	BTH-199	SEE DWG	DOM. H. W.	NAT. GAS	199,000	40" F	140" F	230	100	3/4"	3"	
WH-2	1	A. O. SMITH	BTH-199	SEE DWG	DOM. H. W.	NAT. GAS	199,000	40" F	140" F	230	100	3/4"	3"	

PUMP SCHEDULE

LOCATION	SERVICE	MANUFACTURER	MODEL	GPM	EST. HEAD	RPM	HORSEPOWER	ELECTRICAL CHARACTERISTICS	TYPE
MECH. ROOM	DOM. HWR	GRUNDFOS	UP15-18SU	10	35'	-	1/4	120V/1φ/60 Hz.	IN-LINE

BACKFLOW PREVENTER SCHEDULE

MARK	QTY.	SYSTEM	MANUFACTURER	MODEL	SIZE	GPM	PRESSURE DROP	REMARKS
BFP-1	1	DOM. WATER	WATTS	909 OSY	3"	100	12 PSI	(1)

(1) INCLUDE WATTS 919AGF AIR GAP.

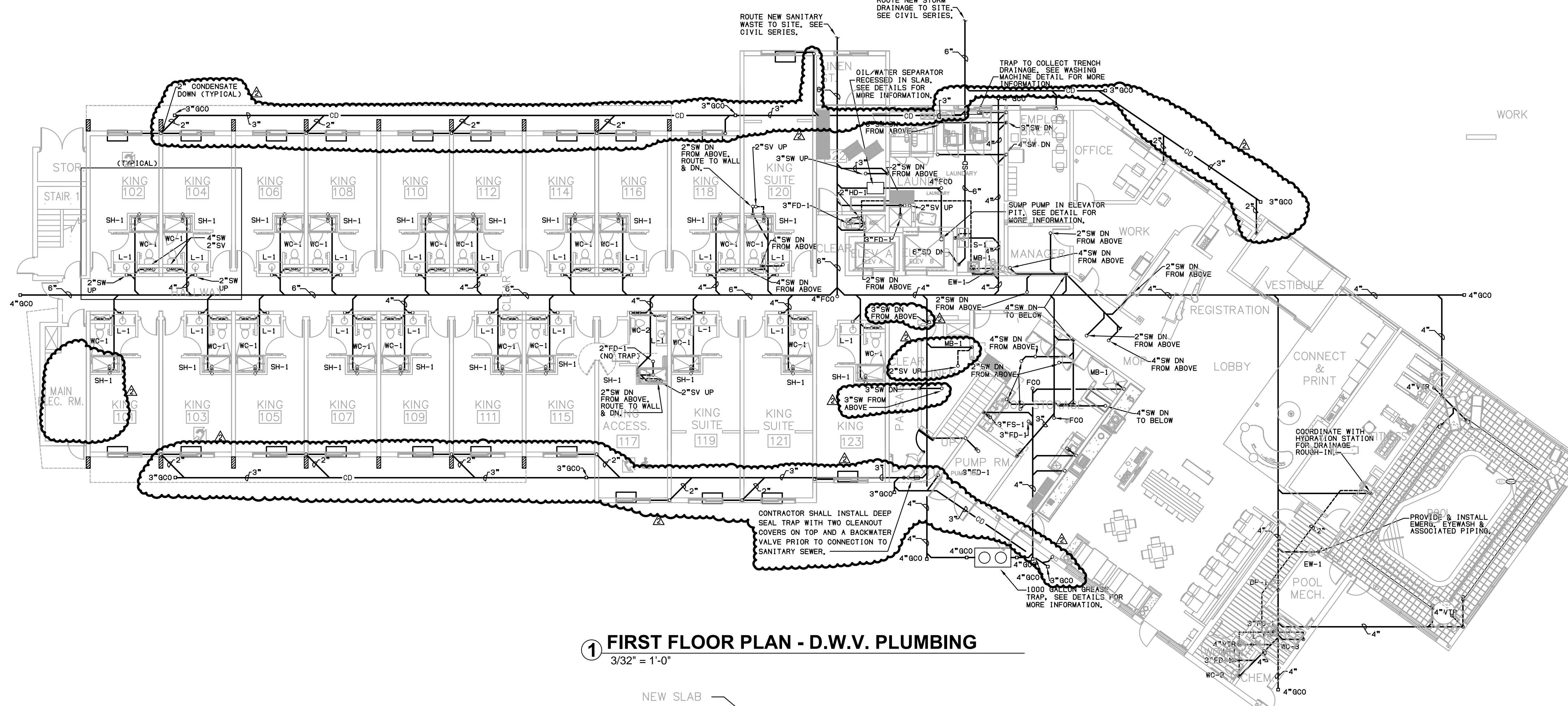
DRAIN & CLEANOUT SCHEDULE

TAG	DESCRIPTION
FD-1	FLOOR DRAIN: (STANDARD) CAST IRON FLOOR DRAIN WITH FLANGE, INTEGRAL CLAMPING COLLAR, SEEPAGE OPENINGS, ADJUSTABLE 5" SQUARE NICKEL BRONZE STRAINER WITH VANDAL PROOF SCREW AND 1/2" PLUGGED PRIMER TAP, WADE W-1104G-TY. SET TOP OF DRAIN 1/2" BELOW FINISHED FLOOR ELEVATION.
FD-2	FLOOR DRAIN (MECHANICAL): CAST IRON FLOOR DRAIN WITH FLANGE, INTEGRAL CLAMPING COLLAR, SEEPAGE OPENINGS, 1/2" PLUGGED PRIMER TAP AND SQUARE ADJUSTABLE HEAVY 8-INCH SQUARE NICKEL BRONZE TOP WITH LOOSE SET TRACTOR GRATE, WADE 1100-G. FURNISH AND INSTALL DEEP SEAL P-TRAP. SET TOP OF DRAIN TO 1/2" BELOW FINISHED FLOOR ELEVATION.
HD-1	HUB DRAIN (STANDARD): CAST-IRON HUB DRAIN. PROVIDE TRAP UNLESS OTHERWISE NOTED. SET TOP OF DRAIN 1/2" AFF.
TD-1	TRENCH DRAIN (ADA, KITCHEN): MODULAR SECTION, TYPE 304 STAINLESS STEEL, 6"WIDE FACE, PRE-SLOPED CHANNELS, STAINLESS STEEL GRATE STYLE AND TYPE TO BE COORDINATED WITH ARCHITECT FOR FINAL SELECTION, EQUAL TO J. R. SMITH 9660 SERIES. INSTALL PER MANUFACTURER RECOMMENDATIONS.
FS-1	FLOOR SINK: (HALF GRATE) 12"x12"x10" DEEP CAST IRON FLOOR SINK WITH ANCHOR FLANGE, WITH SEEPAGE HOLES CLAMP COLLAR, BOTTOM DOME STRAINER, ACID RESISTANT PORCELAIN INTERIOR WITH ACID RESISTANT HALF GRATE EQUAL TO ZURN 1902 SERIES. SET TOP OF DRAIN FLUSH WITH FINISHED FLOOR.
FS-2	FLOOR SINK: (OPEN GRATE) 12"x12"x10" DEEP CAST IRON FLOOR SINK WITH ANCHOR FLANGE, WITH SEEPAGE HOLES CLAMP COLLAR, BOTTOM DOME STRAINER, ACID RESISTANT PORCELAIN INTERIOR LESS GRATE EQUAL TO ZURN 1902 SERIES. SET TOP OF DRAIN FLUSH WITH FINISHED FLOOR.
WCO	WALL ACCESS COVER: ROUND STAINLESS STEEL ACCESS COVER WITH 1/4-20 X 3-1/2" CENTER SCREW TO BE USED WITH COUNTERSINK CLEANOUT PLUG WITH A 1/4"-20 TAPPED HOLE EQUAL TO WADE W-8480R8.
FCO	FLOOR CLEANOUT: CAST IRON CLEANOUT W/ THREADED, ADJUSTABLE HOUSING, FLANGED FERRULE W/ TAPERED BRASS PLUG, ROUND SECURED NICKEL BRONZE SCORIATED TOP, EQUAL TO WADE W-6000-TY.
GCO	GRADE CLEANOUT: CAST IRON CLEANOUT W/ THREADED, ADJUSTABLE HOUSING, FLANGED FERRULE W/ TAPERED BRASS PLUG, ROUND SECURED NICKEL BRONZE VENEER TRACTOR TYPE COVER WITH SECURITY CREWS, EQUAL TO WADE W-6004Z-179-TY.

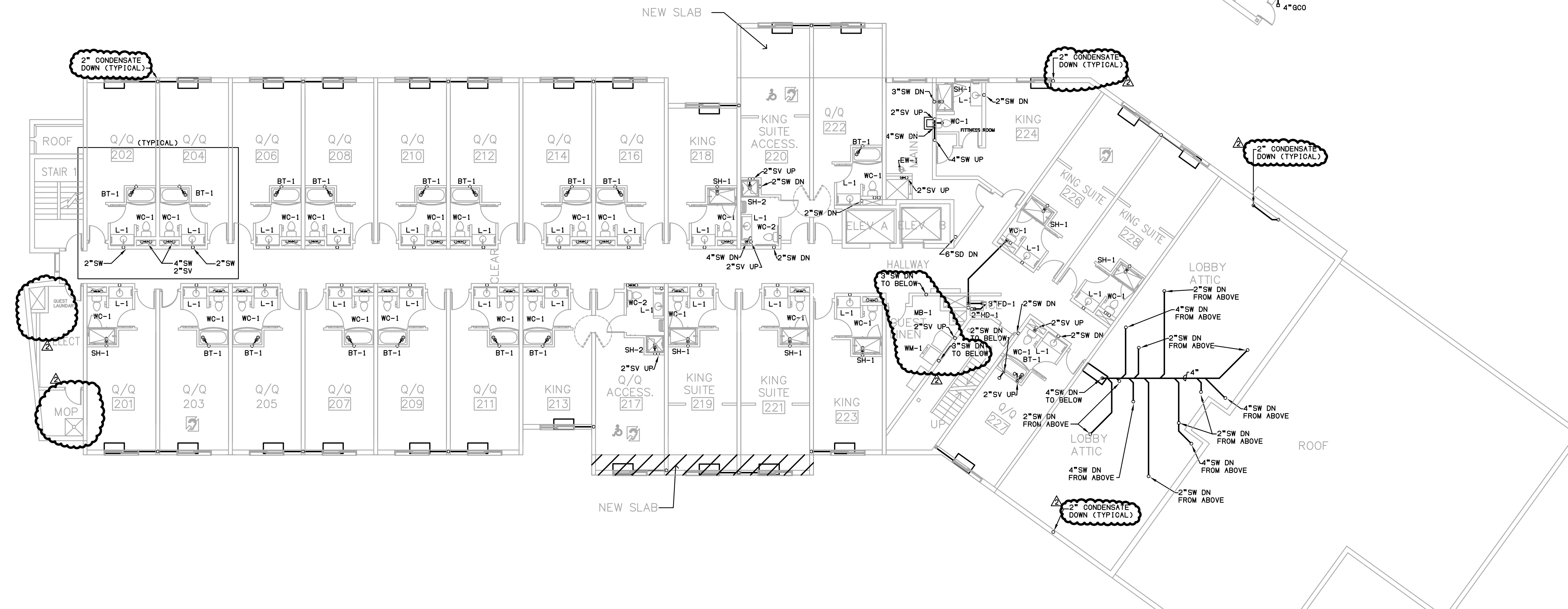
NOTES:

1. TAP AND TEST "T" SHALL NOT BE USED FOR WALL CLEAN-OUTS.

NO.	DATE	DESCRIPTION
1	01/19/2016	FOR CONSTRUCTION
2	03/11/2016	REVISION # 2



1 FIRST FLOOR PLAN - D.W.V. PLUMBING
 3/32" = 1'-0"



1 SECOND FLOOR PLAN - D.W.V. PLUMBING
 3/32" = 1'-0"

**MARRIOTT
 FAIRFIELD**

290 POWER DRIVE,
 BATESVILLE, MS 38606

SEAL

COPY RIGHTED BY
 BYRON B. CARSON, JR., AIA-ARCHITECT - 2014
 DRAWINGS, SPECIFICATIONS, AND DESIGN
 CONCEPTS CONTAINED HEREWITH SHALL NOT BE
 USED OR REPRODUCED IN WHOLE OR IN ANY
 FORM, WITHOUT THE WRITTEN CONSENT OF -
 BYRON B. CARSON, JR., AIA-ARCHITECT. DO NOT
 SCALE THESE DRAWINGS. USE GIVEN
 DIMENSIONS ONLY. IF NOT SHOWN, VERIFY
 CORRECT DIMENSIONS WITH THE ARCHITECT.
 CONTRACTOR SHALL VERIFY ALL DIMENSIONS
 PRIOR TO INSTALLATION OF THE WORK
 DESCRIBED HEREIN.

CONSULTANTS

ISSUES & REVISIONS

NO.	DATE	DESCRIPTION
1	01/19/2016	FOR CONSTRUCTION
2	03/11/2016	REVISION # 2

PROJECT NAME:

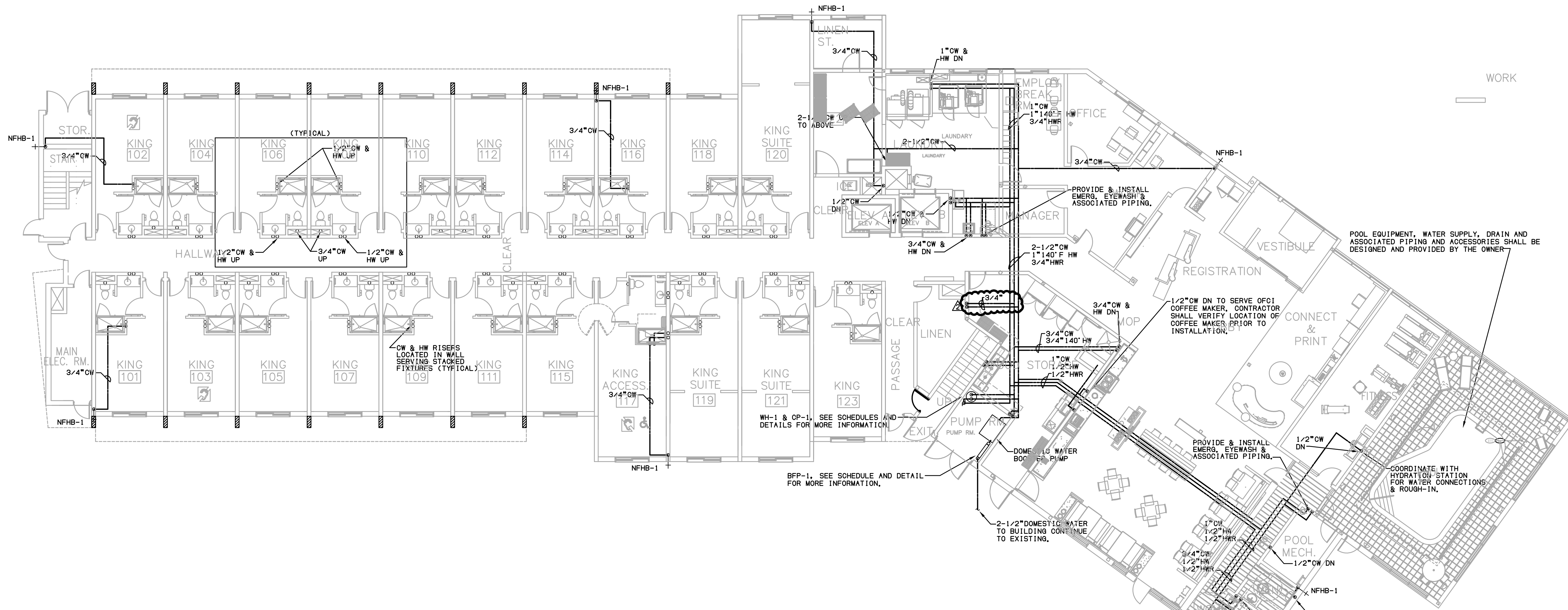
PROJECT NUMBER:

DRAWING NAME:
 FLOOR PLAN -
 PLUMBING

DRAWN BY: MDP
 CHECKED BY: MDP
 DATE: 01-19-16
 SCALE: AS NOTED

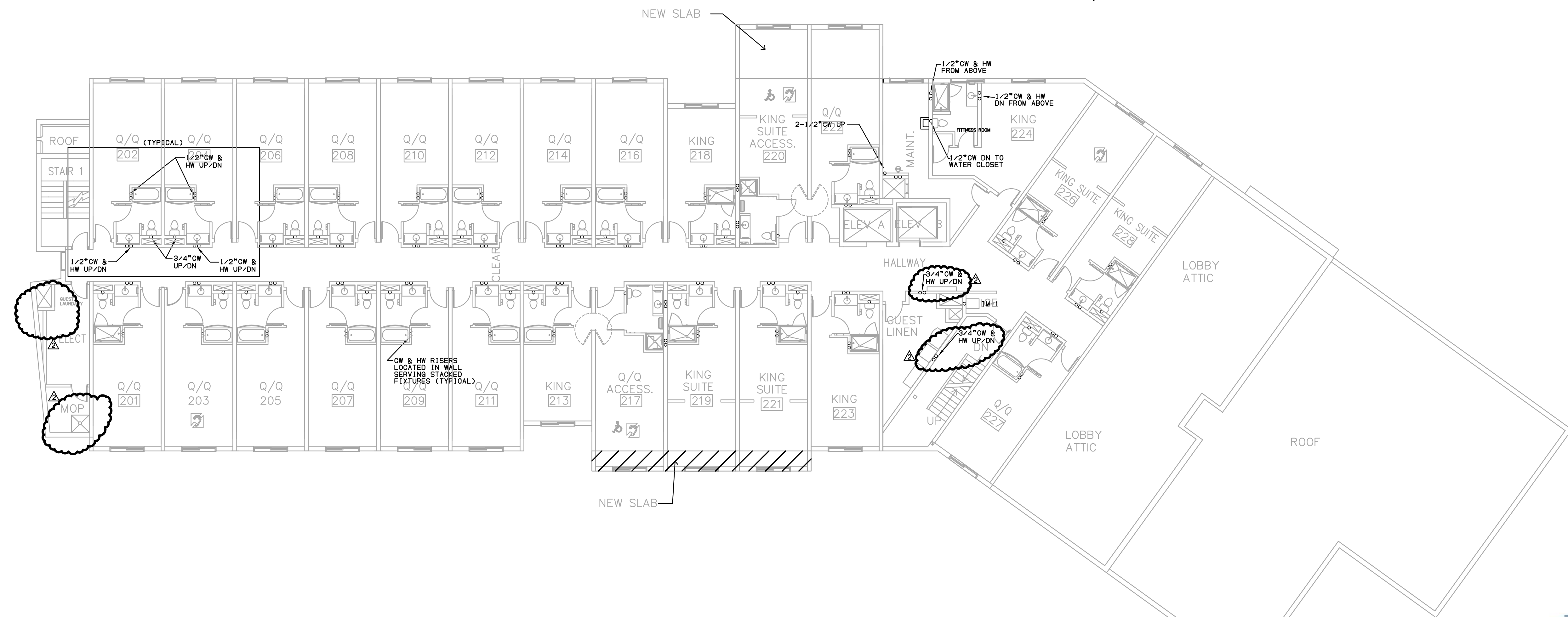
DRAWING NUMBER

P103



1 FIRST FLOOR PLAN - DOMESTIC WATER PLUMBING

3/32" = 1'-0"



1 SECOND FLOOR PLAN - DOMESTIC WATER PLUMBING

3/32" = 1'-0"

