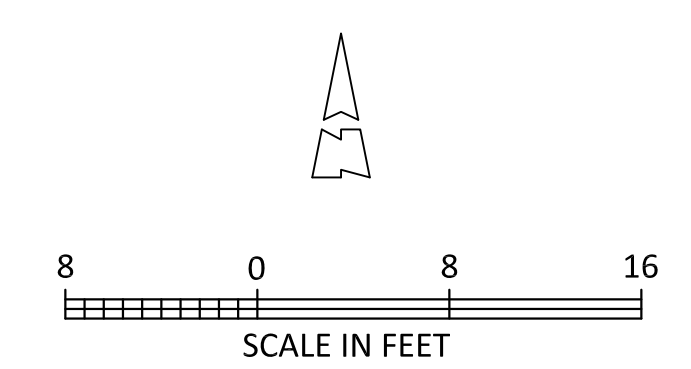


GENERAL NOTES

1. Contractor to coordinate water and sewer connections with the City of Southaven.
2. Contractor to install silt fence where required to insure silt does not leave property prior to any grading activities.
3. Contractor to install stone base construction entrance/exit prior to any grading activities.
4. Contractor shall not make any unauthorized changes to this plan without prior written consent from the Engineer and the City of Southaven.



David A. Evans, III, PE, PLS



SITE PLAN

Date:
08/27/2015

Project Number
SP-MS(17)0719-15

Lot 4 Goodman Place Subdivision, First Revision
Goodman Road,
Southaven, Mississippi

Drawn By
DAE

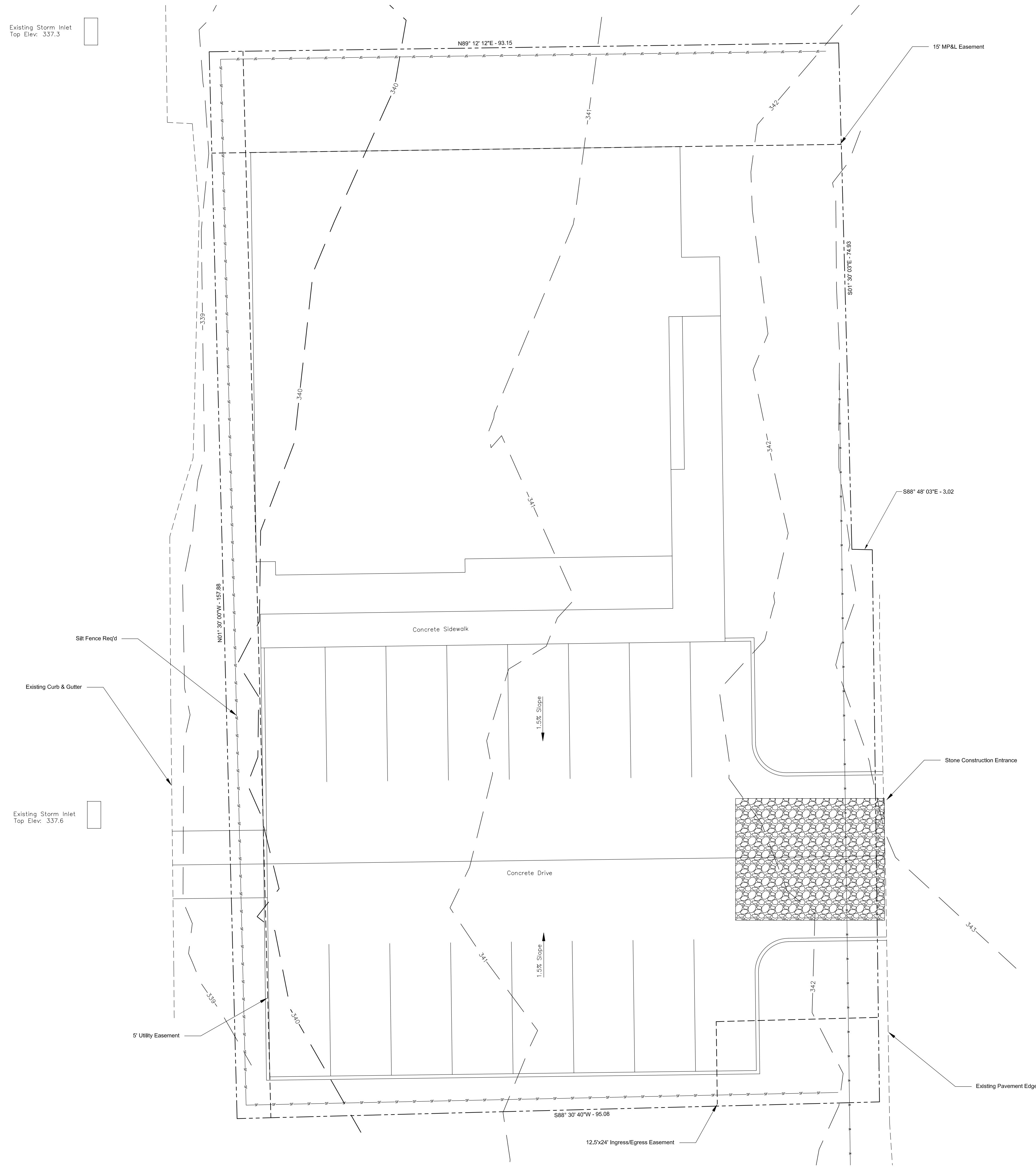
Checked By
DAE

David A. Evans, III, PE, PLS
Professional Engineers & Professional Land Surveyors

102 Hickory Lane
Batesville, Mississippi 38606
Phone: (662) 902-5005
Fax: (662) 578-8081
email: david.a.evans@belsouth.net

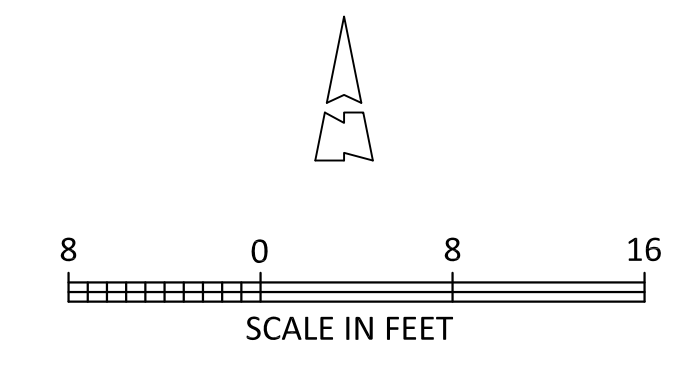
Sheet No.

C-1



GENERAL NOTES

1. Contractor to coordinate water and sewer connections with the City of Southaven.
2. Contractor to install silt fence where required to insure silt does not leave property prior to any grading activities.
3. Contractor to install stone base construction entrance/exit prior to any grading activities.
4. Contractor shall not make any unauthorized changes to this plan without prior written consent from the Engineer and the City of Southaven.



David A. Evans, III, PE, PLS

EROSION CONTROL PLAN
 Project Number
 SP-MS(17)0719-15
 Date:
 08/27/2015

Lot 4 Goodman Place Subdivision, First Revision
 Goodman Road
 Southaven, Mississippi

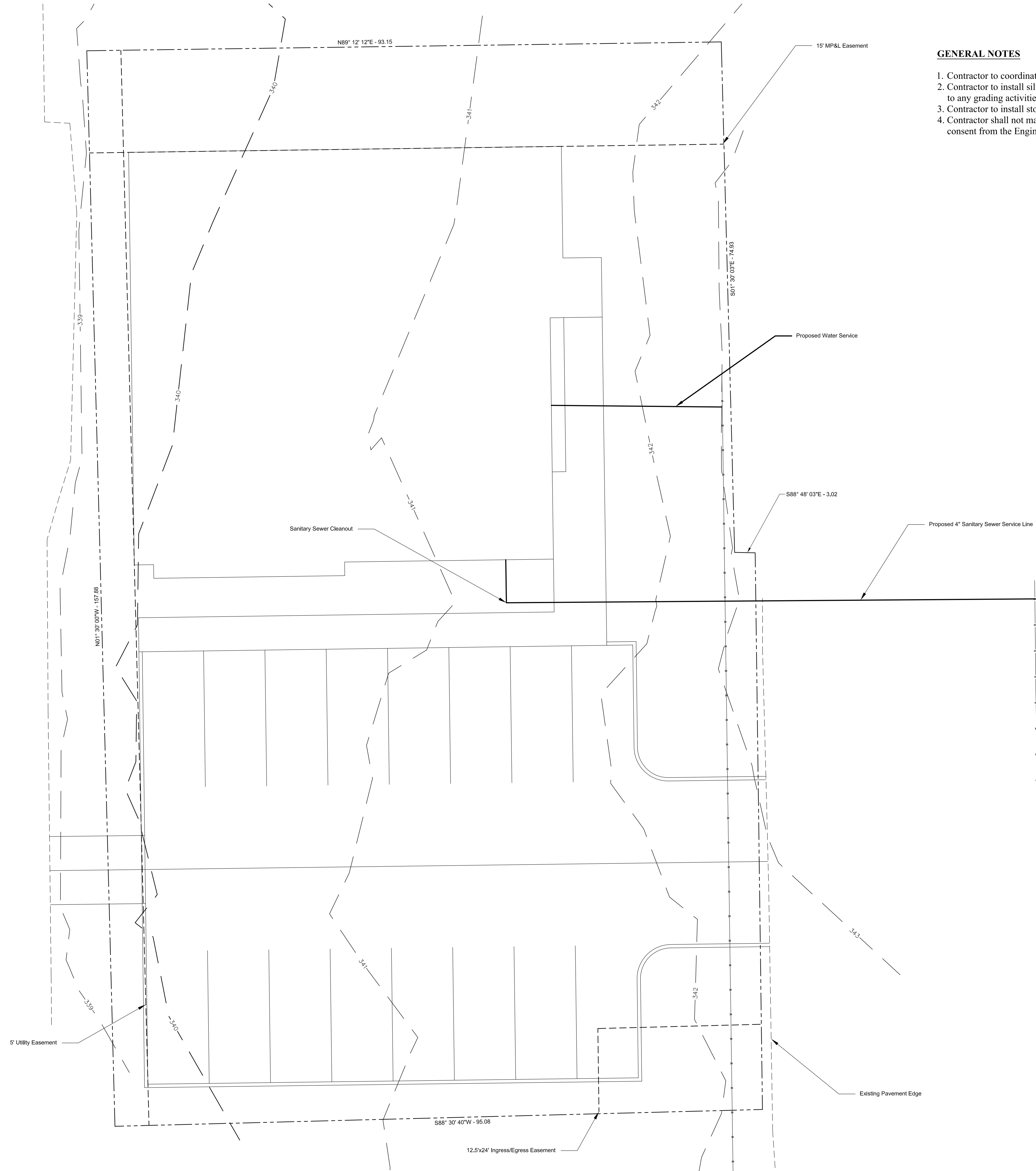
Drawn By
 DAE
 Checked By
 DAE

David A. Evans, III, PE, PLS
 Professional Engineers & Professional Land Surveyors
 102 Hickory Lane
 Batesville, Mississippi 38606
 Phone: (662) 902-5005
 Fax: (662) 578-8081
 email: david.a.evans@bellsouth.net

Sheet No.
C-2

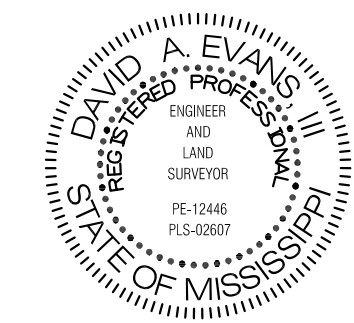
Existing Storm Inlet
Top Elev. 337.3

Existing Storm Inlet
Top Elev. 337.6

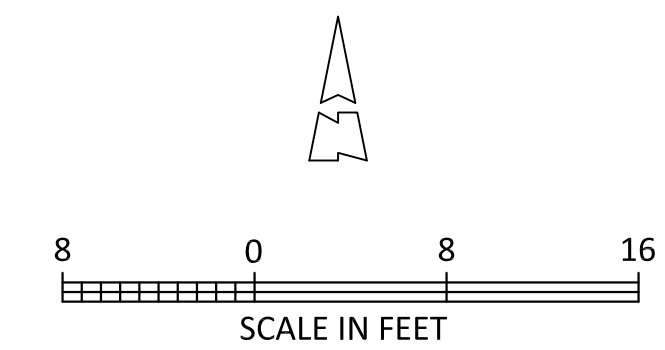


GENERAL NOTES

1. Contractor to coordinate water and sewer connections with the City of Southaven.
2. Contractor to install silt fence where required to insure silt does not leave property prior to any grading activities.
3. Contractor to install stone base construction entrance/exit prior to any grading activities.
4. Contractor shall not make any unauthorized changes to this plan without prior written consent from the Engineer and the City of Southaven.



David A. Evans, III, PE, PLS



UTILITY PLAN

Project Number
SP-MS(17)0719-15

Date:
08/27/2015

Lot 4 Goodman Place Subdivision, First Revision
Goodman Road
Southaven, Mississippi

Drawn By
DAE

Checked By
DAE

David A. Evans, III, PE, PLS
Professional Engineers & Professional Land Surveyors

102 Hickory Lane
Batesville, Mississippi 38606
Phone: (662) 902-5005
Fax: (662) 578-8081
email: david.a.evans@bellsouth.net

Sheet No.

C-3